

Description

Introducing the SSH Swing Away Heat Press, an ideal choice for entry-level businesses or hobbyists seeking a practical and safe alternative to clamshell heat presses. The swing-away design ensures a more even pressure distribution, enhancing both safety and efficiency.

With a 180-degree rotation of the swing arm, this swing heat press allows the heat platen to be moved aside safely, minimizing the risk of machine shaking or toppling. This feature contributes to a secure and stable operation, ensuring peace of mind during use.

The SSH Swing Away Heat Press accommodates printable articles with a thickness of up to 15mm, making it versatile for transferring various items such as fabric, T-shirts, mouse pads, ceramic tiles, glass, coasters, MDF, and more. Explore the capabilities of this heat press for a wide range of applications, all while prioritizing safety and ease of use.



Brand New

Simple Swing Away Heat Press Machine

from microtec

Machine Type: Manual, Swing Away, Economy
Platen Size: 12**15"(29x38cm)

Model No.: SSH-1215



The image shows a red and black manual heat press machine. It features a large red rectangular platen at the base. A black metal frame supports a swing arm mechanism on the right side, which holds a black heat platen. A black handle is attached to the swing arm for manual operation. A control panel with a digital display and buttons is located on the right side of the machine. The background is a light gray with a subtle geometric pattern.



Limited Rod:
Stand still, more safty



Vertical Digital Controller:
Accurate in time and
temp. display



12"*15" Size:
Popular size and versatile



Swing Away Design:
Safe easy to use,
and better pressure

Feature



Vertical Digital Time & Temp. Controller: This controller makes the electric box smaller (light volume weight), while is also accurate in time and temp. display.



Swing Away Design: It helps you can work away from the heat, and easy to put the material to the press machine, and also with better pressure as the pressure can be directed straight down.



Limited Rod: This rod helps to keep the machine standing still. SSH Swing Away Heat Press is designed to provide a secure user experience, making it an excellent choice for both beginners and experienced users.



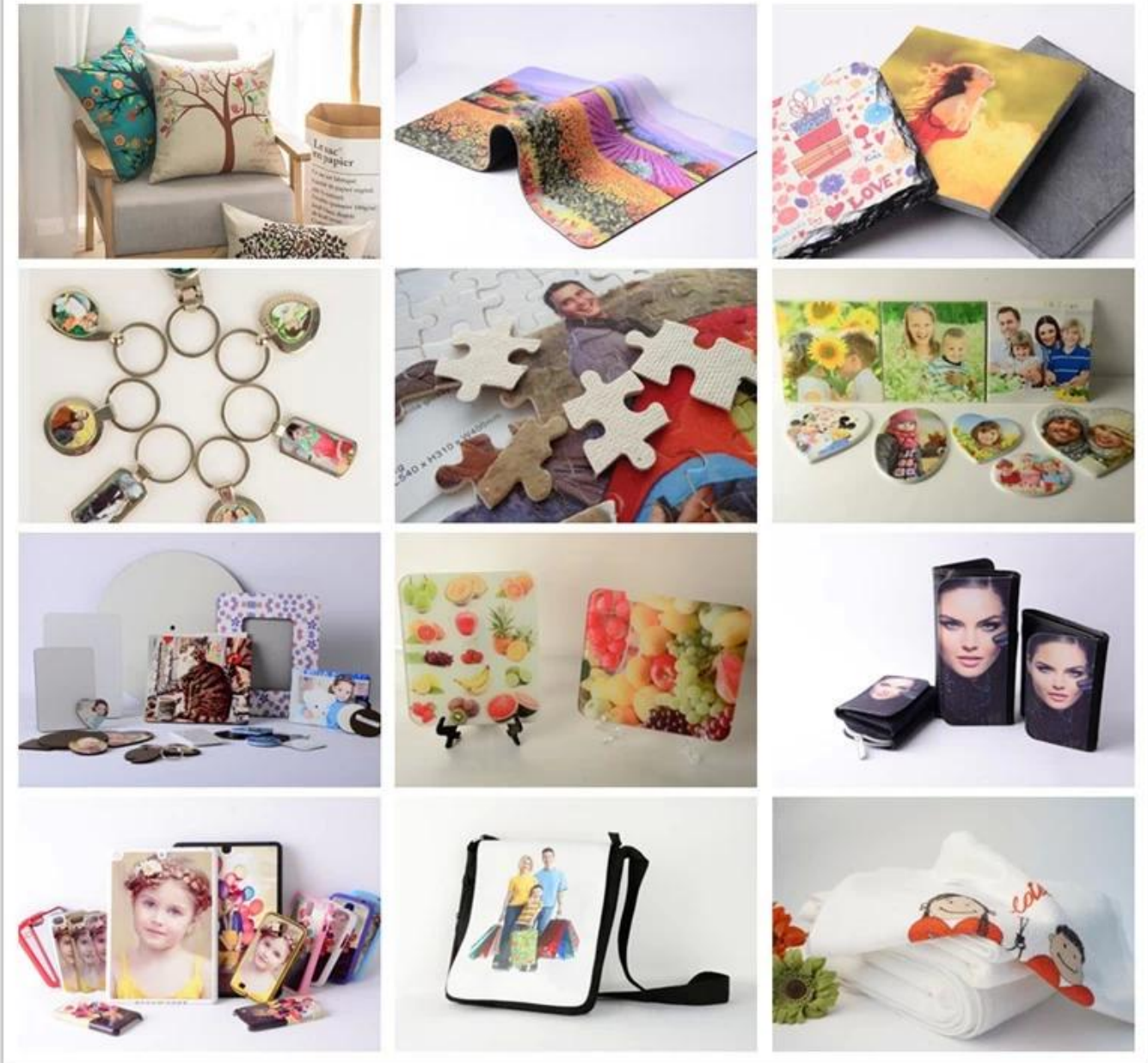
Practical and Cost-Effective: This heat press provides a practical and cost-effective solution for businesses and hobbyists, offering reliable performance without compromising on safety or functionality.

Specification

Model No.	SSH-1215
Machine Type	Manual, Swing Away, Economy
Platen Size	12"x15" (29x38cm)
Controller	NTTF-2421WR Digital Time & Temp. Control
Printable Articles	Up to 15mm Thickness
Time heating to 200°C	Around 10minutes
Voltage	110V/ 220V
Power	1.6KW/ 1.8KW
Frequency	50HZ/ 60HZ, Current 10-15A
Time Range	0-999 Sec.
Maximum Temp	225 C
Machine Size	44.5x39x29cm
Carton Size	55x47x45cm
Net Weight	23kg
Gross Weight	26kg

Application

SSH1215 heat press accommodates printable articles with a thickness of up to 15mm, providing versatility for transferring a wide range of items, including fabric, T-shirts, mouse pads, ceramic tiles, glass, coasters, MDF, and more.



Gallery



