

## Description

This [auto open heat press](#) enables you to multi-task while helping to avoid over application and ruined garments. The pressure of this [heat transfer machine](#) is more even, with excellent transfer images. The auto open function saves time and effort allowing the operator to apply more transfers compare to traditional [manual heat press](#). This [sublimation heat press](#) brings greater productivity in the sublimation.

The MAX-CLAM Series [high pressure auto open heat press machine](#) is designed for small size sublimation blanks, offered with two different exchangeable under plates.

With auto open functon, the [MAX-CLAM Series heat press](#) is highly recommended for small business use and home use. The heat press requires no air feed. With electromagnet and gas spring, the heat platen will open at the end of every print cycle to save time and effort, and increase the efficiency.

Designed and suitable for all [heat press](#) applications including: T-shirts, frames, slippers and other flat products.

This [auto open heat press machine](#) is perfect choice for small advanced business and home use.



## Feature



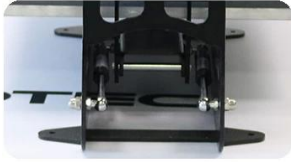
**Pressure Adjust Knob:** To adjust the pressure easily when sublimate items with different thicknesses.



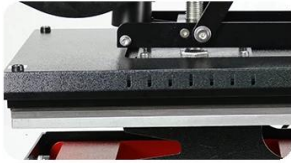
**Magnetic Auto-Open Release:** Requiring no air feed, this auto open heat press utilizes an electromagnet release mechanism with a gas spring.



**Advanced Digital Controller:** Simple design and clear system. It is very easy for user to operate. Live digital time and temperature readout for accurate results every time with production cycle counter.



**Double Gas Springs:** The upgraded double gas springs to ensure more smooth heat press opening.



**Anti-Scald Protect Cover:** Protective metal cover above the heat platen. It can protect user from scalding.

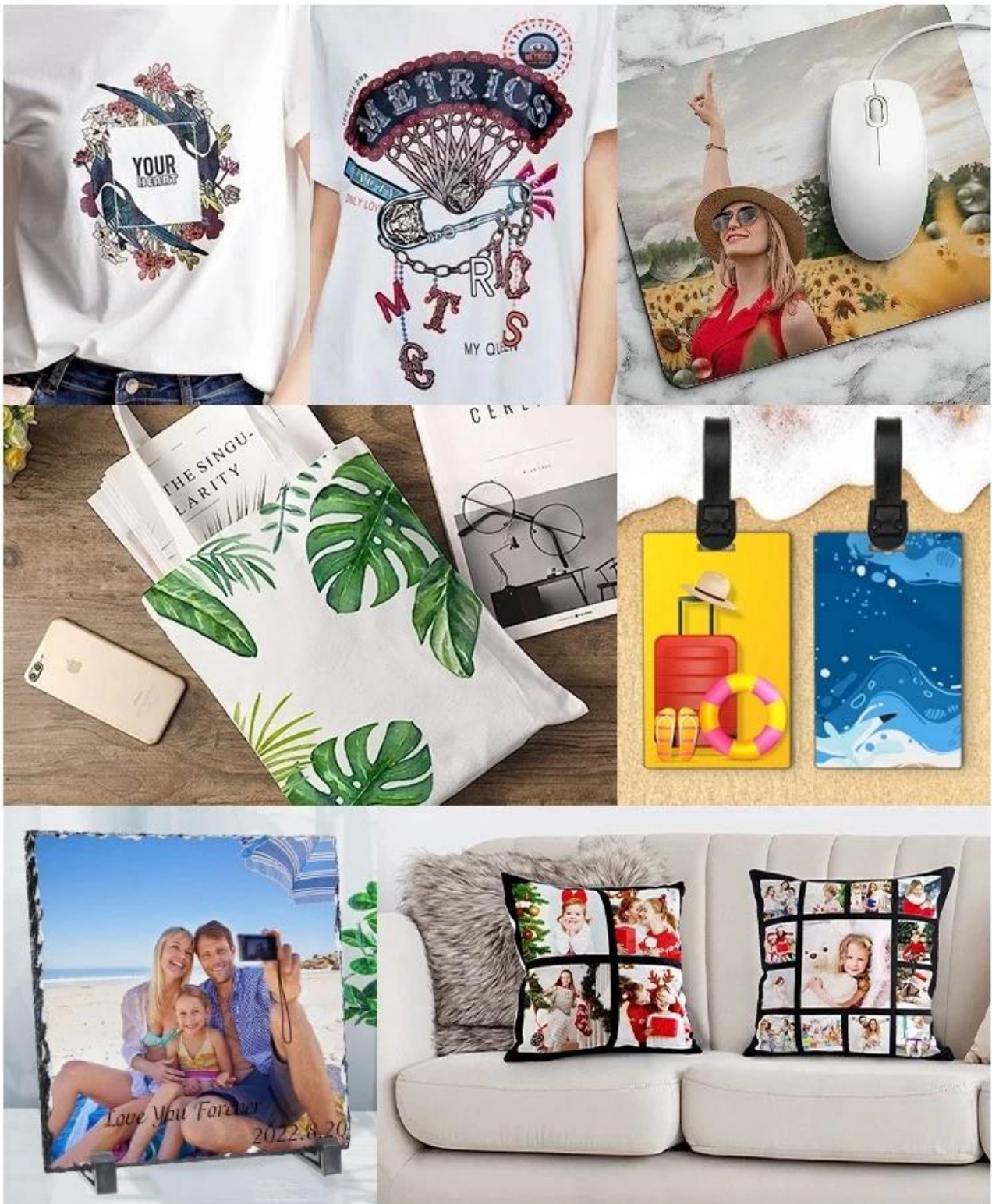
## Specification

<b>Model No.</b>	MAX-15CLAM/ MAX-20CLAM
<b>Machine Type</b>	Auto Release, Clamshell
<b>Platen Size</b>	15"x15"/ 16"x20" (38x38cm/ 40x50cm)
<b>Under Plate</b>	Exchangeable
<b>Controller</b>	GY-06 Digital Time & Temp. Control
<b>Printable Articles</b>	Up to 6mm Thickness
<b>Opening Angle</b>	50 Degrees
<b>Gas Spring Control</b>	Yes
<b>Voltage</b>	120V/ 220V
<b>Power</b>	1750W/ 1800W
<b>Time Range</b>	0-999 sec.
<b>Maximum Temp.</b>	225 C
<b>Packing Size</b>	54x88x57cm
<b>Gross Weight</b>	60kg

## Application

MAX CLAM sublimation heat press is capable of handling a wide range of items beyond T-shirts, the MAX CLAM is a versatile tool for various heat transfer needs, making it a popular choice globally. For example: T-shirts, MDF board, metallic sheet, slippers and other flat products.





## Gallery

# PRODUCT DISPLAY

GY-06 Digital Controller



Electromagnet



Emergency Stop



Anti-scald  
Protect Cover



Balance Spring

Large  
Opening  
Angel



