

Description

The ASTM-24 Pneumatic Heat Press Machine stands out with its impressive 16"x24" (40x60cm) double working station and air-operated system. This pneumatic heat press machine is designed for production-oriented pressing, featuring push-button operation, fully digital temperature and time control, and a robust steel welded frame. All these features are offered at an affordable price, making it an excellent choice for large format automatic heat pressing.

DOUBLE STATION

40x60cm Pneumatic Heat Press

Model: ASTM-24



Feature

Key Features of the 16"x24" Double Station Pneumatic Heat Press:

Industrial-Grade Construction:

Combines a heavy-duty solid industrial-grade framework with high-quality electric components for durability and reliability.

Smooth Drawer-Style Motion:

Operates with a smooth front-loading motion, enhancing efficiency and ease of use during production.

High-Pressure Pneumatics:

Utilizes top-down pneumatics with fully adjustable PSI control, ensuring consistent and precise pressure during heat pressing.

Fully Digital Temperature & Time Control:

Features a fully digital control system for temperature and time, providing accuracy and convenience in operation.

Versatile Sublimation Applications:

Perfect for heat transfer pressing on a wide range of materials, including fabric, complex garments, metal, wood, ceramics, glass, and more.

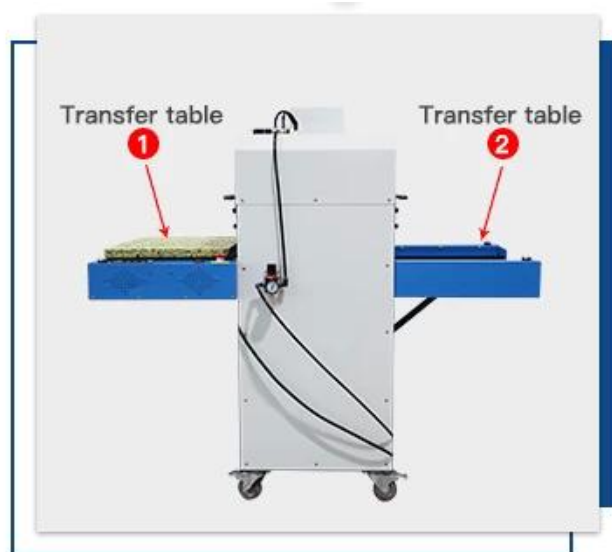
Industrial-Grade Automatic Solution:

Positioned as an industrial-grade automatic solution that bridges the gap between smaller platens and large-format heat presses.

The ASTM-24 automatic heat press machine is an ideal solution for businesses requiring efficient and precise heat transfer on various materials. Its dual working stations, air-operated system, and user-friendly features make it a reliable and cost-effective choice for large-format automatic heat pressing applications.

1 Two Working Tables

Dual platform use, more convenient.



2 Gravity Die Casting Heating Plate

High quality heat element, which makes the heat distribution more even and stable.

3 GY-06 Digital Controller

Accurate temperature display & control, auto time counting, per-alarm, and temperature collation.



4 Pneumatic Mode

Pneumatic Auto Model, High Pressure.

5 Safe Emergency Button

When the machine is operating, you can press this button to protect the user's personal safety in an emergency.

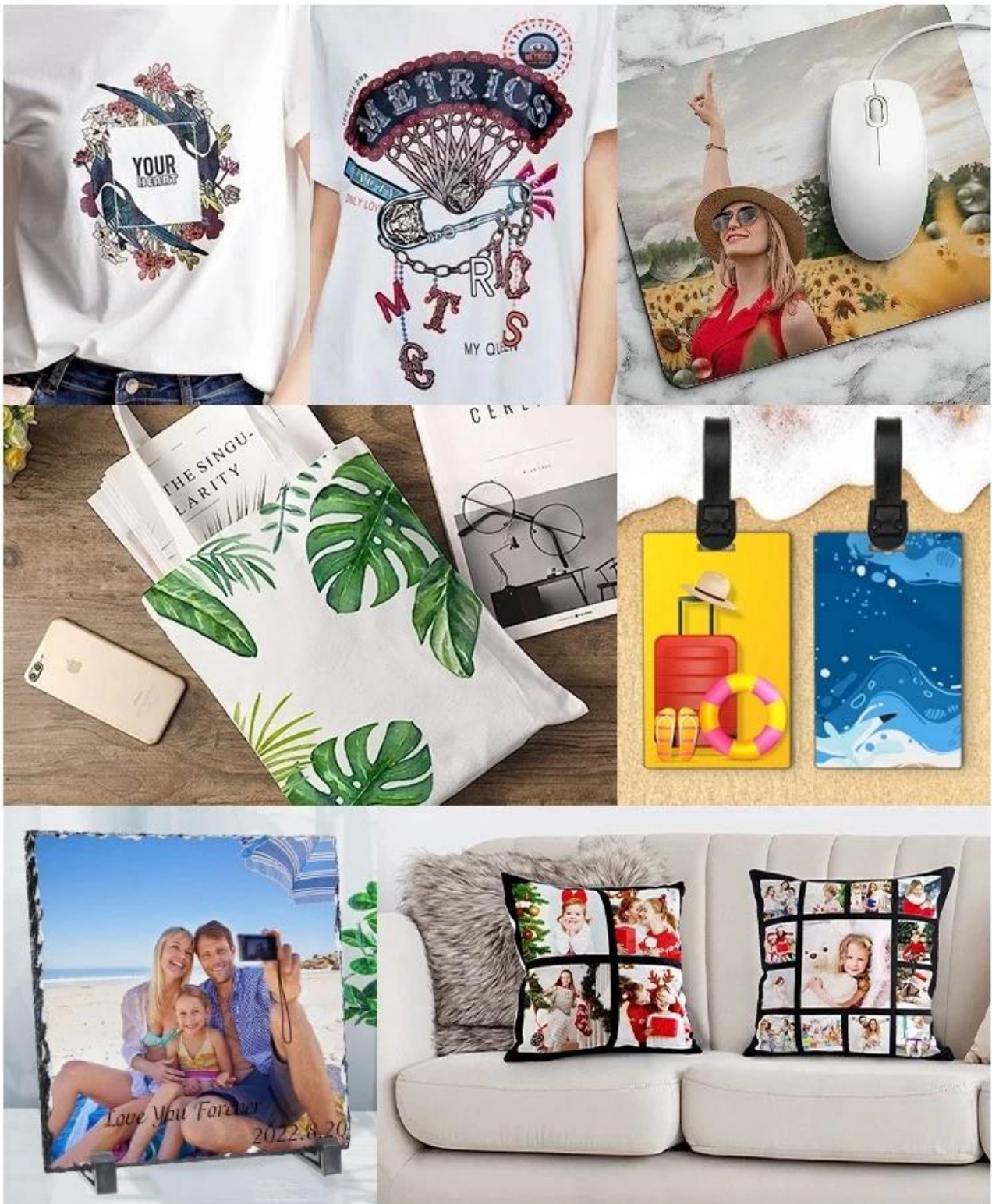


Specification

Model No.	ASTM-24
Machine Type	Automatic, Double Station
Platen Size	16"x24" (40x60cm)
Under Plate	Slide-out
Controller	GY-06 Digital Time & Temp. Control
Printable Articles	Up to 50mm Thickness
Air Compressor Required	Yes
Voltage	120V/ 220V
Power	1600W/ 1800W
Time Range	0-999 sec.
Maximum Temp.	225 C
Packing Size	148x93x148cm
Gross Weight	278kg (Wooden Package)

Application

ASTM-24 Double station pneumatic heat press is ideal for heat transferring onto large fabric pieces and metal photo panels, like Banners, sportswear, metal boards, cushions etc.



Package

[Microtec Pneumatic Large Format Heat Press](#) is well-packed in wooden package and provide with manual.

— SAFTY PACKING & SHIPPING —



Cardboard Box Packing: Standard export boxes with internal cushioning of pearl cotton to ensure safe transportation of goods. Warning signs for proper box placement and waterproof bags inside.



Wooden Crate Packing: For large machine, machine's feet are locked onto the crate to prevent movement during transportation, and the crate has forklift slots for easy customer transportation. The material is plywood, which avoids fumigation and reduces transportation costs.



Lead Your Path to Heat Transfer Excellence





22 Year's Heat Press
Manufacture



28000m² Factory
280+ Staffs



CE/SGS/RoHS/UL
Certificate



2 Years Warranty
Lifetime Online
Support



100% Quality Control
Inspection



Constant R & D
Leading the Industry



Customized Service
Available



100+ Export
Countries

—⚡ ADVANCED EQUIPMENTS ⚡—

Robotic Arms & Laser Cutting Machines

Standardized Production Line

Higher Production Efficiency

Safer Working Environment

Highly Improved Machine Quality



