

Description

Introducing the SSHM Swing Away Heat Press, an ideal choice for entry-level businesses or hobbyists seeking a practical and safe alternative to clamshell heat presses. The swing-away design ensures a more even pressure distribution, enhancing both safety and efficiency.

With a 180-degree rotation of the swing arm, this swing heat press allows the heat platen to be moved aside safely, minimizing the risk of machine shaking or toppling. This feature contributes to a secure and stable operation, ensuring peace of mind during use.

The SSH Swing Away Heat Press accommodates printable articles with a thickness of up to 15mm, making it versatile for transferring various items such as fabric, T-shirts, mouse pads, ceramic tiles, glass, coasters, MDF, and more. Explore the capabilities of this heat press for a wide range of applications, all while prioritizing safety and ease of use.



SSH BRAND NEW
SIMPLE SWING AWAY - HEAT PRESS MACHINE

MODEL NO.: SSH-1215M

- Machine Type: Manual, Swing Away, Economy
- Platen Size: 12" * 15" (29x38cm)

The image shows a red and black heat press machine with a swing-away arm. The machine has a red upper platen and a black lower platen. The swing arm is black and has a handle. The machine is set against a blue background with a diagonal line.



Limited Rod:
Stand still, more safety



GY-04 Digital Controller:
Accurate in time and temp. display



12"*15" Size:
Popular size and versatile



Swing Away Design:
Safe easy to use, and better pressure

Feature



GY-04 Digital Controller: The digital display enhances visibility and allows users to easily adjust settings according to their needs.



Swing Away Design: The swing-away design adds convenience to the heat transfer process and ensures a safe work environment by swinging away from the work area during operation.



Limited Rod: This rod helps to keep the machine standing still. SSH Swing Away Heat Press is designed to provide a secure user experience, making it an excellent choice for both beginners and experienced users.



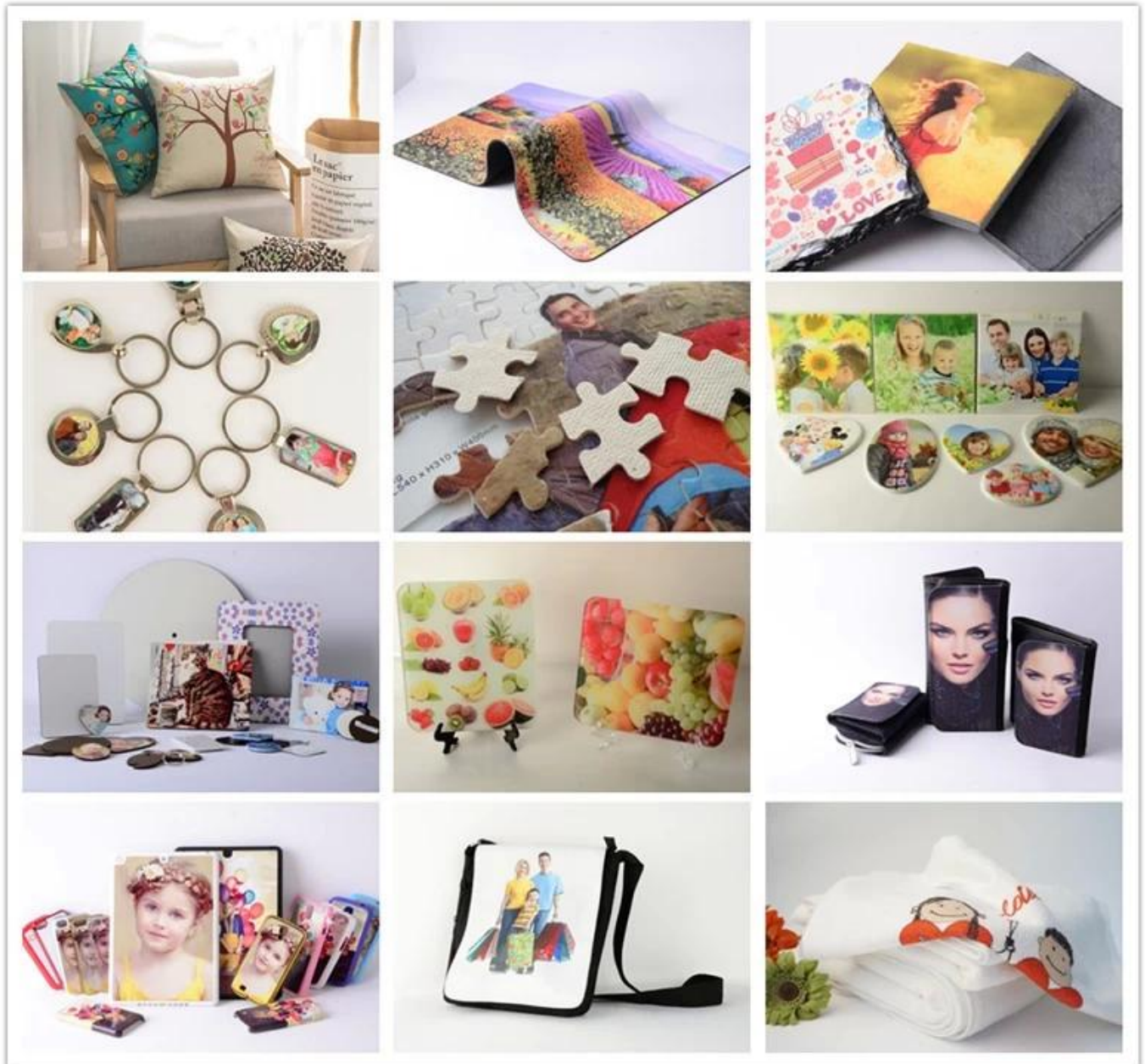
Practical and Cost-Effective: This heat press provides a practical and cost-effective solution for businesses and hobbyists, offering reliable performance without compromising on safety or functionality.

Specification

Model No.	SSH-1215M
Machine Type	Swing Away, Economy
Platen Size	12"x15" (29x38cm)
Controller	GY-04 Digital Time & Temp. Control
Printable Articles	Up to 15mm Thickness
Voltage	110V/ 220V
Power	1.6KW/ 1.8KW
Frequency	50HZ/ 60HZ, Current 10-15A
Time Range	0-999 Sec.
Maximum Temp	225 C
Temperature Accuracy	±5°C
Machine Size	44.5x39x29cm
Carton Size	55x49x40cm
Net Weight	23kg
Gross Weight	26kg

Application

SSH1215 heat press accommodates printable articles with a thickness of up to 15mm, providing versatility for transferring a wide range of items, including fabric, T-shirts, mouse pads, ceramic tiles, glass, coasters, MDF, and more.



Gallery

