

Description

HTW-300 Dark Inkjet Heat Transfer-papier

1. Productnaam: Dark Inkjet Heat Transfer Paper
2. Code: HTW-300
3. Size: A4 A3 0.42*30M
4. Compatibel met printers: EPSON Canon HP, kleinformat printer of was, pen, oliepotlood, fluorescerende marker, kleurpotlood enz.
5. Compatibele inkt: kleurstofinkt, pigmentinkt
6. Afdrukmodus: Kwaliteitsinstelling - Beeld, soort: normaal papier of fotopapier van goede kwaliteit
7. Heat perstempertuur: 165 graden
8. Warmtetijd: 25 seconden
9. Hot/cold Peel na hittepers
10. Druk: gemiddelde druk
11. Stof: lichte stof, donkere kleurstof (zwart, donkerblauw enz.) Elke stof, katoen
12. Packing: 20sheets/polybag of 100sheets/Pack
13. Verwarmingstips: 5 donkere papieren voeg een vetvrij papier toe, verwijder het printing-beeld dat je nodig hebt warmte en doe het op de stof voeg het vetvrije papier en een stuk wit katoen toe, het beeld zal helderder worden



Feature

- Personaliseer stof met favoriete foto's en kleurenafbelingen.
- Ontworpen voor levendige resultaten op donkere, lichtgekleurde katoen of katoen/polyester gemengde stoffen
- Ideaal voor het personaliseren van T-shirts, canvas tassen, schorten, cadeauzakjes, muismatten, foto's op quilts etc.
- Opstrijken met een gewoon strijkijzer en warmtepersmachines.
- Goed wasbaar en kleurvast

Specification

Ink Jet Transfer Paper

What's your need?

InkJet Transfer paper:
(HTW-300)



Computer:



Normal InkJet printers
(Normal Inks):



Heat Press/
Iron-On

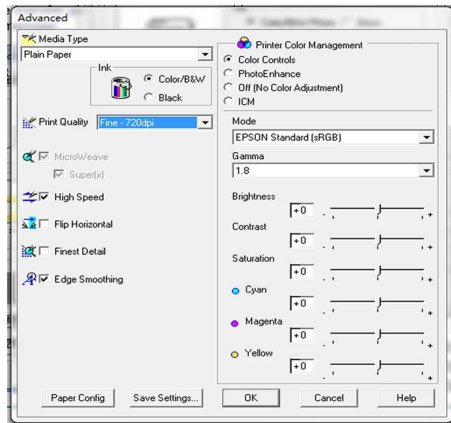


About Transfer Paper?

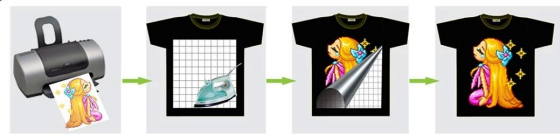
With inkjet transfer paper, you can transfer your photos and images with wax crayons, Oil pastels, fluorescent markers, color pencil, Normal dye ink or pigment ink, to T-shirts, sweatshirts, aprons, or just about any cotton, cotton blend, or polyester fabric. For best results, use light colored material with a smooth surface.

1. Printing Instructions

- 1 Print design on the paper with the correct orientation panel. Print the image on the coated side of the transfer paper. Check printer settings; single-sheet feeding is recommended.
- 2 Use normal print settings when preparing for print. No need to oversaturate with ink.



2. Hand Iron Transferring Instructions:



- a. Iron on a hard surface, Don't steam, Place a pillow case or T-shirt between your hard surface and your garment to allow the heat to penetrate the transfer paper.
 - b. Adjust iron at "Wool/cotton" setting. Briefly iron the fabric to ensure that it is completely smooth.
 - c. Before transferring, leave the printed image to dry for approx. 15 minutes, cut out the motif without leaving a margin around the edges, peel off image layer gently from the back paper. Place image layer onto the textile with the printed image facing upwards.
 - d. Cover a grease proof paper onto the image layer, Iron the grease proof paper, applying less pressure, warm up the grease proof paper evenly with slow circling, then enhance pressure movements from edge to edge and make sure that heat is evenly transferred over the entire area, Don't forget the corners and edges. When moving the iron, less pressure should be given, iron for approx. 4 min for 8.5" X 11" size image.
 - e. Follow-up ironing the whole the grease proof paper quickly, heating all of the grease proof paper again for approximately 10-13 seconds, then peel off grease proof paper starting at the corner.
- Notes:** It is possible to use the same grease proof paper for 5 times.

3. Heat Press Transferring Instructions:



- a. Set the temperature of heat press on 165°C and 25 ~30 second to transfer.
- b. First, press the fabric for about 5 second to make sure smoothly.
- c. After printing, please wait for a while to make sure to dry of inks, then cut off the edge along image, peel the blank off.
- d. Peel off the image layer gently
- e. Place image layer with image facing upward on fabric.
- f. Lay over a grease proof paper onto image
- g. Lay over a cotton fabric onto grease proof paper, then press on 165°C and 25 ~30 second to transfer
- h. Peel off the cotton fabric and the grease proof paper. **Finished!**

4. Before Washing:

Leave finish item for at least 24 hours before wash. Wash inside out in cold water. Dry at normal heat settings. Do not use bleach, fabric softener, or harsh detergents. Do not iron directly over transfer.

IMPORTANT! We thoroughly test each of our products on various substrates using different transfer equipment. However, it is impossible for us to duplicate all variables using all substrates and transfer equipment. Therefore, it is essential that you test the paper prior to production using your equipment, methods, and substrate material. Heat presses vary in accuracy. Conduct tests to determine the best time and temperature to use with your equipment. Please keep in mind that the seller's and manufacturer's maximum obligation shall be to replace any paper that has proven to be defective. Neither the seller nor the manufacturer shall be liable for injury, direct or consequential, arising out of the use of, or inability to use the paper.

Application

Donker (ondoorzichtig) inkjet transferpapier is ideaal voor het personaliseren van donkere of lichtgekleurde T-shirts, schorten, cadeauzakjes, muismatten, foto's op quilts en meer.



Gallery

t-shirt



T-shirt

Mini T-shirt

Cap

phone case



iPhone 5 Case



Polymer Coaster



Ornament



Fridge Magnet



home decoration



Keychain



Pill Box

Mirror



ID Tag

personal accessories