

Description

SSH Swing Away Heat Press 是 Microtec 公司最新推出之产品。其设计简单，操作方便，适用于各种材质的热转印。

该机器具有 180 度旋转功能，方便用户从不同角度进行操作。其加热板尺寸为 12x15 厘米，适用于大多数标准尺寸的热转印材料。

SSH Swing Away Heat Press 适用于 15mm 厚度的材料，如 T 恤、帽子、鼠标垫、木板、MDF 板等。其操作简单，易于上手，是家庭和专业用户的理想选择。



Brand New

Simple Swing Away Heat Press Machine

from microtec

Machine Type: Manual, Swing Away, Economy
Platen Size: 12**15"(29x38cm)

Model No.: SSH-1215



The image shows a red and black manual heat press machine with a swing-away platen. It features a digital display on the right side and a handle on the left for manual operation. The machine is set against a white background with a subtle geometric pattern.



Limited Rod:
Stand still, more safty



Vertical Digital Controller:
Accurate in time and temp. display



12"*15" Size:
Popular size and versatile



Swing Away Design:
Safe easy to use,
and better pressure

Feature



Vertical Digital Controller: Accurate in time and temp. display.



Swing Away Design: Safe easy to use, and better pressure.



Limited Rod: Stand still, more safty. SSH Swing Away Heat Press



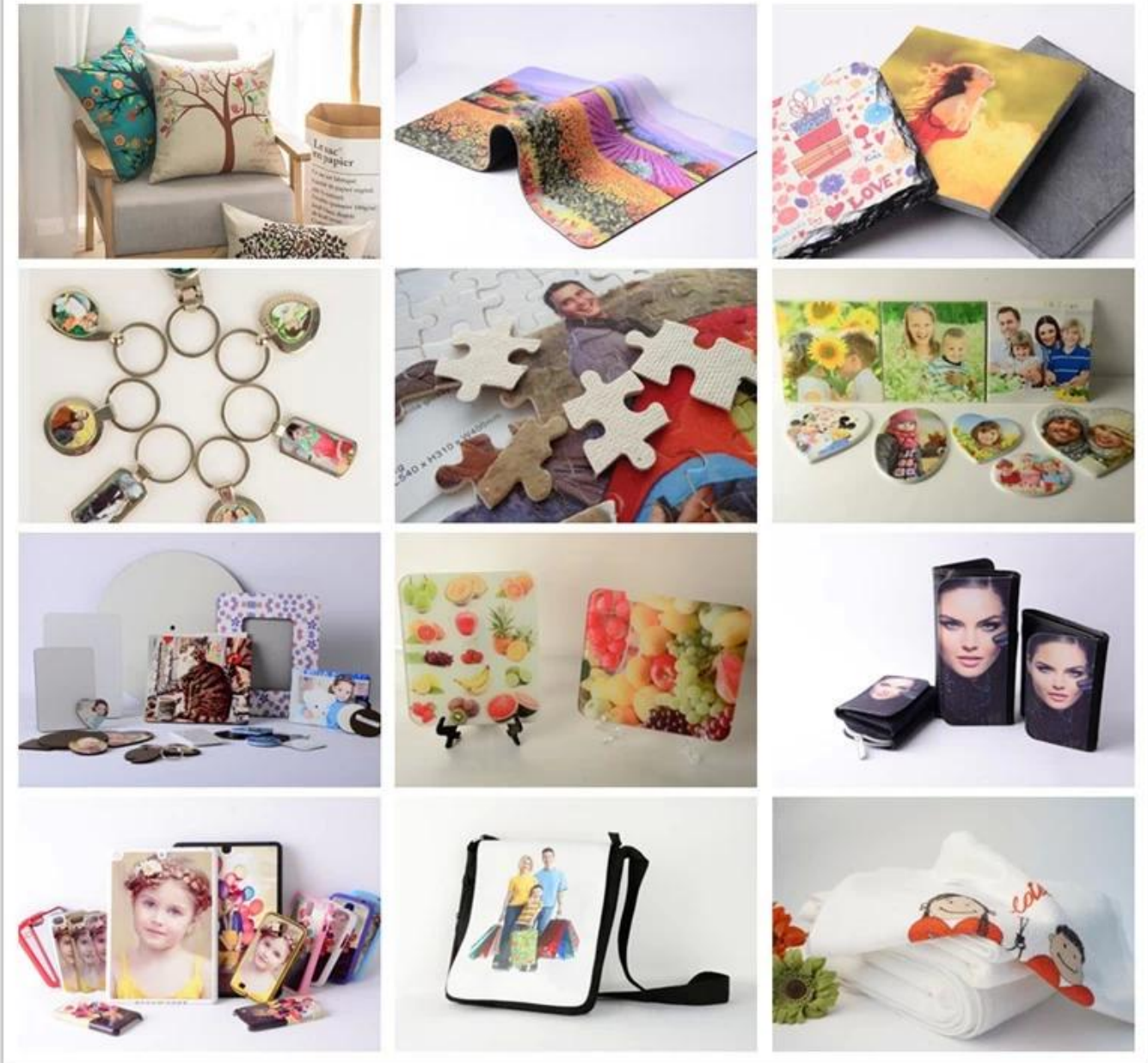
12"*15" Size: Popular size and versatile.

Specification

| | |
|-------------------|-------------------|
| SSH-1215 | SSH-1215 |
| NTTF-2421WR | NTTF-2421WR |
| 12"x15"(29x38cm) | 12"x15"(29x38cm) |
| 15mm | 15mm |
| 200°C | 200°C |
| 110V/220V | 110V/220V |
| 1.6KW/1.8KW | 1.6KW/1.8KW |
| 50HZ/60HZ, 10-15A | 50HZ/60HZ, 10-15A |
| 0-999 | 0-999 |
| 225°C | 225°C |
| 44.5x39x29cm | 44.5x39x29cm |
| 55x47x45cm | 55x47x45cm |
| 23kg | 23kg |
| 26kg | 26kg |

Application

SSH1215 is suitable for 15mm thickness materials such as wood, bamboo, metal, plastic, PVC, ABS, acrylic, MDF, etc. It is a professional tool for cutting and shaping these materials.



Gallery

