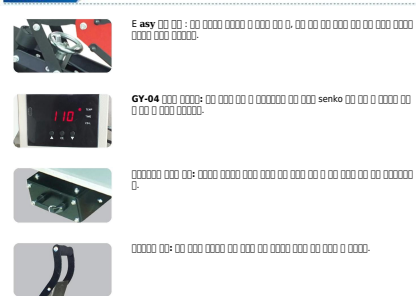


Description

SENKO-15A and SENKO-20A are simple designs of SENKO auto open heat press. This SENKO Heat Press is also perfect for T-shirt sublimation business.

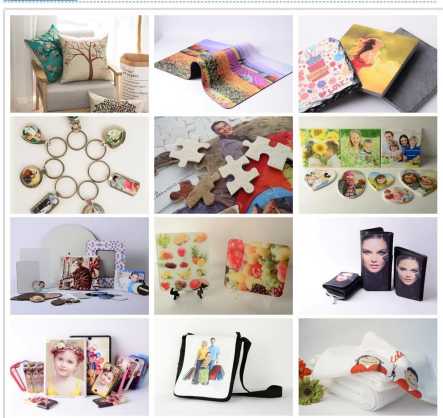
Feature



Specification

	SENKO-15A	SENKO-20A
Size	15''*15''(38x38cm)	16''*20''(40x50cm)
Platen Size	15''*15''(38x38cm)	16''*20''(40x50cm)
Platen Thickness	8mm	8mm
Pressure	25psi	25psi
Power	120V/220V	120V/220V
Power Consumption	1800W	1800W
Temperature Range	0-999F	0-999F
Temperature Range	225°C	225°C
Weight	89x54x75cm 57kg	90x55x76cm 65kg

Application



SENKO-15A and SENKO-20A are simple designs of SENKO auto open heat press. This SENKO Heat Press is also perfect for T-shirt sublimation business.

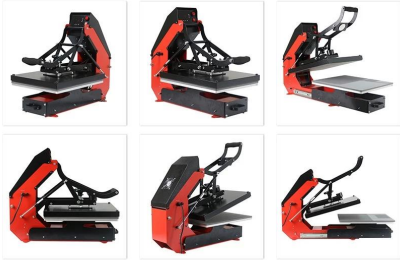
Gallery

Auto Open T-shirt Heat Press
with Slide-out Press Bed
Model No.: SENKO-15A/ SENKO-20A

- Machine Type: Auto Release, Clamshell
- Platen Size: 15''*16''(38*38cm)/ 16''*20''(40*50cm)



GALLERY



DESCRIPTION

The SENKO-15A/20A is the simple design of SENKO auto open heat press. This SENKO Heat Press is also perfect for T-shirt sublimation business.

This sublimation printing machine has been crafted with the highest grade components professionally. The automatic function allows your hands free during the whole press working. With the rotating knob, it is easy for you to make the pressure setting before, during or after your heat press procedure. As soon as the pressure has been adjusted, the balance springs on the top platen provides even pressure throughout – which ensure good transfer quality (always come out even, and without any pressure spots). Once the timer expires, this auto-opening simple heat press will open itself automatically, that means you have more enough time for other works.



Each Single Copper sheathed heating rod is tested before it is cast in an aluminum alloy or Mica Sheet. These heating rods are comparable to those found in industrial ovens that heat up quickly, work efficiently and last many years. With our industrial quality heat castings, you can get five years worry free warrant.

APPLICATION

