

Description

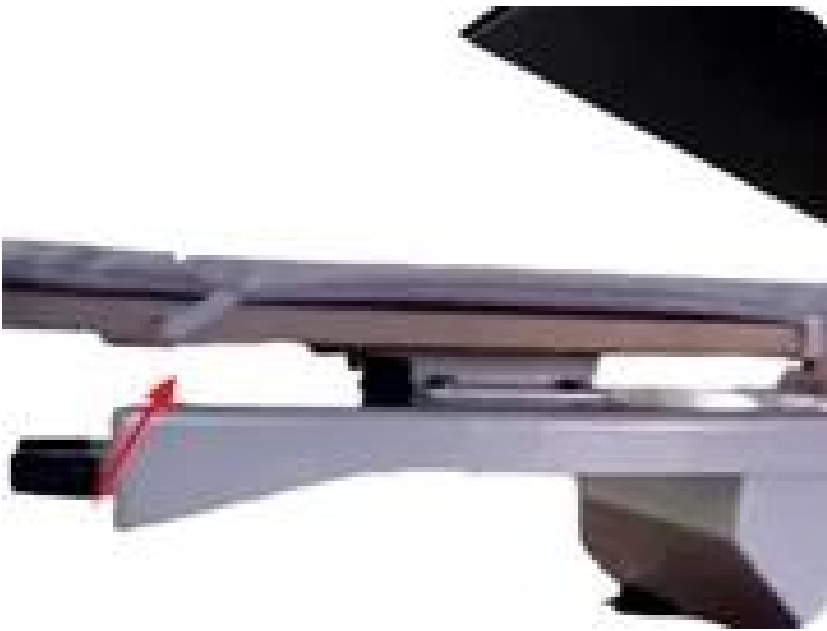
Microtec X-Heat Press Machine. This machine is designed for professional use, featuring a 600W power supply and a 5cm thick aluminum heating plate. The machine is capable of handling items up to 38x38cm, 40x50cm, and larger for diverse DIY possibilities. The machine is built with a sturdy frame and includes safety features for secure operation.

Fully Automatic Heat Press

- Enhanced Safety: Requires dual-hand activation for a secure operation;
- Aluminum Heating Plate (up to 5kg): Ensures even heat distribution for clear and durable transfers.
- Flexible Transfer: Larger Threadability space for easy and flexible item transfers
- Stability: Up to 80kg (32 pounds) pressure for precise transfers
- Options Galore: Choose from 38*38cm (15*15"), 40*50cm (16*20"), and larger for diverse DIY possibilities



Feature



00 000
00: X-0
000 00
00 00 0
00 00 0
000 000
00 000
000 000
00
Space
000000.



00000
00: 000
0000 00
00000 0
0000. 0
0 0000
300 00.
00 00 0
00 0 00
00 00.



00 00 0
00: 00
00 0000
000 000
00 0000
00 000
000 000
00.
00.

Product Features



Fully Automatic



Slide-out for Easy Use



High Pressure Application



Wide Opening



Safety Use
Auto-Off Feature



Even Heat
Even Pressure

Specification

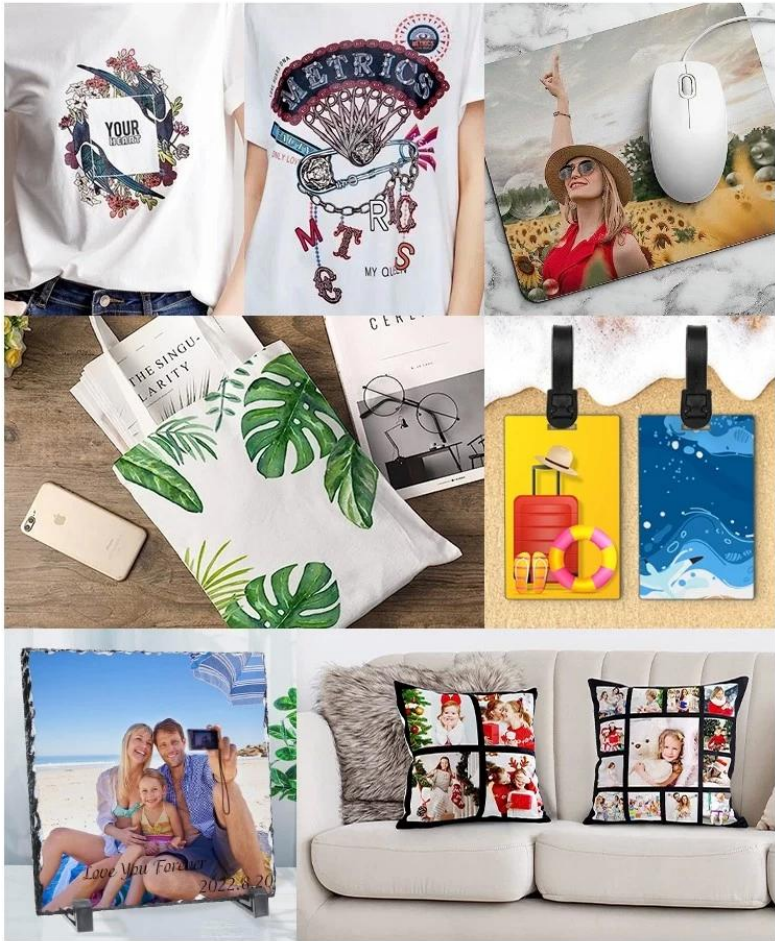
| |
|-----------------------------------|
| MODEL-X15 / MODEL-X20 |
| 15"x15"(38x38cm)/16"x20"(40x50cm) |
| GY-13 |
| 120V/ 220V |
| 50/ 60HZ |
| 35KG / 42KG |
| 39KG / 46KG |
| 55x42x41cm / 53x39x41cm |
| 65x52x50cm / 75x52x50cm |
| CE |
| 20, 5 |

COMPARISON

| Contrast value | Model X | Another Brand Auto Heat Press |
|-------------------|--|---|
| Pressure | 95kg/cm | 35kg/cm |
| Threadability | Large threadability space for flexible garment placement | no design for threadability clothes on, only put the clothes flat on the machine, transfers limited |
| Temperature table | 6" Touch screen control panel | Digital Time & Temp. Control |
| Opening angle | Opening angle up to 15cm, safer operation | Opening angle is only 5cm, and the operating space is limited |
| Heating Plate | Up to 5kg aluminum heating plate for even heat distribution | Only 2kg heating plate, uneven heat distribution |
| Pusher method | Electric drive pusher Design, High pressure, stable operation, longer life | Plastic Electric drive pusher design, Low pressure, short life |

Application

Model X is suitable for DIY, professional, and commercial use.



Gallery

