

Description

MT-FD03 is a high-performance industrial LED lighting fixture designed for factory environments. It features a compact, square design and is compatible with PLC systems. The fixture is built for durability and long life, with a 30% dimming capability and a 6-year warranty. It is available in 2, 4, and 6-watt versions and is suitable for installation in various industrial settings. The fixture is made of high-quality materials and is designed to withstand harsh industrial conditions. It is a reliable and efficient lighting solution for industrial applications.

Feature

- * LED light source, PLC compatible, long life.
- * IR remote control for easy operation.
- * Dimming function, 30% dimming capability.
- * 6-year warranty, 3-year free maintenance, 2, 4, 6-watt versions available.
- * Compact square design, easy installation.
- * High-quality materials, durable and reliable.
- * Available in 2, 4, and 6-watt versions.
- * 200mm diameter, suitable for industrial environments.
- * 4-watt version, 32kg weight.

Specification

Model	MT-FD03
Dimensions	500 * 600mm
Temperature	150 ° C
IR remote control	6
Power	220V 50Hz, 3KW
Weight	900 * 580 * 260mm
Material	32kg

Application

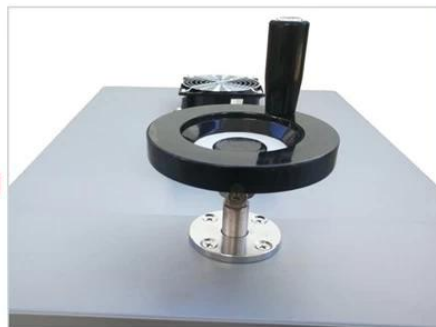
MT-FD03 is suitable for industrial applications, including factory floors, warehouses, and production lines. It provides bright, uniform lighting and is easy to install. The fixture is designed for long life and low maintenance, making it a cost-effective lighting solution for industrial environments.

Gallery

Details

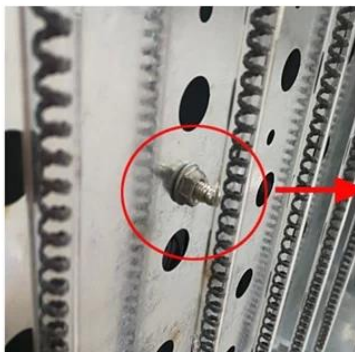


Double Fans

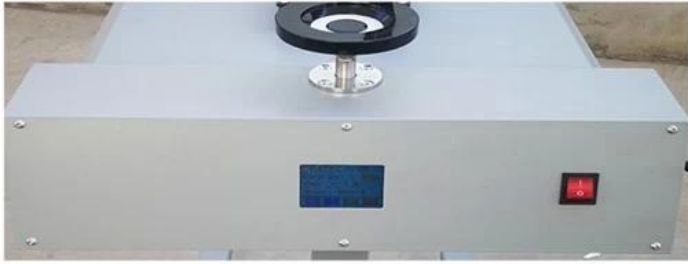


Adjust height wheel

Carbon Fiber IR Lamps



Temperature test probe



Temperature can be controlled at any time



Led Touch Display

Carbon fiber IR lamp:6 PCS

Power:From "0" W to 3000W



On and Off Buttons



Machine base



Package

