

Specification

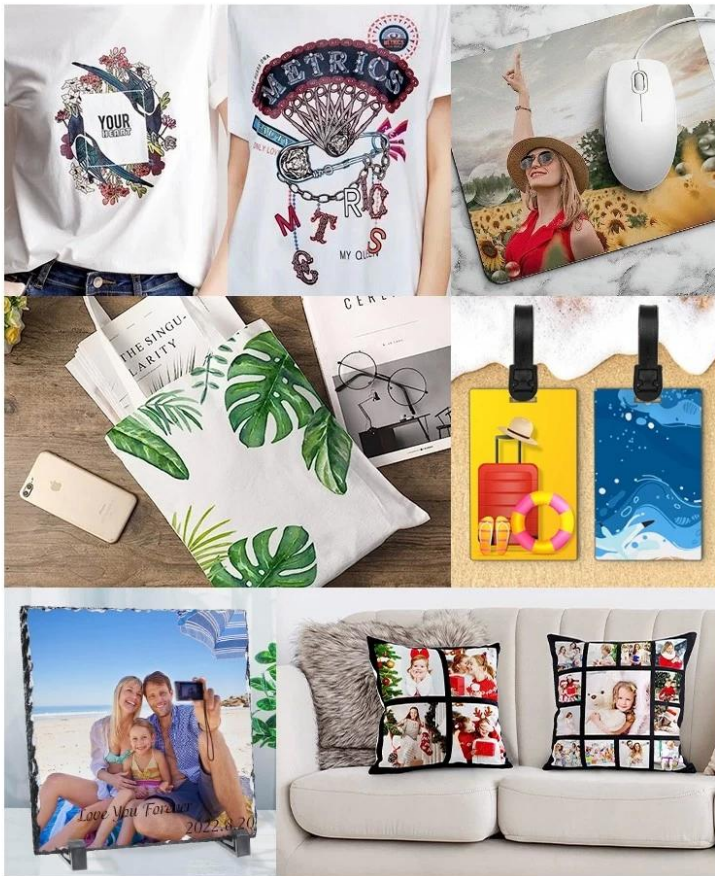
MODEL-X15 / MODEL-X20
15"x15"(38x38cm)/16"x20"(40x50cm)
GY-13
120V/ 220V
50/ 60HZ
35KG / 42KG
39KG / 46KG
55x42x41cm / 53x39x41cm
65x52x50cm / 75x52x50cm
CE

COMPARISON

Contrast value	Model X	HTV Auto Heat Press
Pressure	95kg/cm	35kg/cm
Threadability	Large threadability space for flexible garment placement	no design for threadability clothes on, only put the clothes flat on the machine,transfers limited
Temperature table	6" Touch screen control panel	Digital Time & Temp. Control
Opening angle	Opening angle up to 15cm, safer operation	Opening angle is only 5cm, and the operating space is limited
Heating Plate	Up to 5kg aluminum heating plate for even heat distribution	Only 2kgheating plate, uneven heat distribution
Pusher method	Electric drive pusher Design, High pressure, stable operation, longer life	Plastic Electric drive pusher design, Low pressure, short life

Application

Model X can be used for DIY projects such as t-shirts, mugs, and more.



Gallery

