

Description

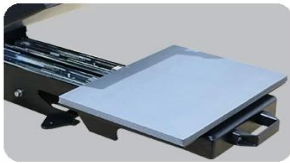
Microtec A4 3D printer, 3D printing, 3D printing, 3D printing, 3D printing. 3D printing, 3D printing, 3D printing, 3D printing, 3D printing.

Microtec 3D printer, 3D printing, 3D printing, 3D printing, 3D printing, 3D printing, 3D printing, 3D printing, 3D printing, 3D printing, 3D printing.

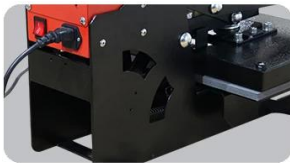
Feature



NTTE-2421WR 3D printer: 3D printing, 3D printing, 3D printing, 3D printing, 3D printing, 3D printing, 3D printing, 3D printing, 3D printing, 3D printing, 3D printing.



3D printing, 3D printing, 3D printing, 3D printing, 3D printing, 3D printing, 3D printing, 3D printing, 3D printing, 3D printing, 3D printing.



COS-HOBBY A4 3D printer: 3D printing, 3D printing, 3D printing, 3D printing, 3D printing, 3D printing, 3D printing, 3D printing, 3D printing, 3D printing, 3D printing.



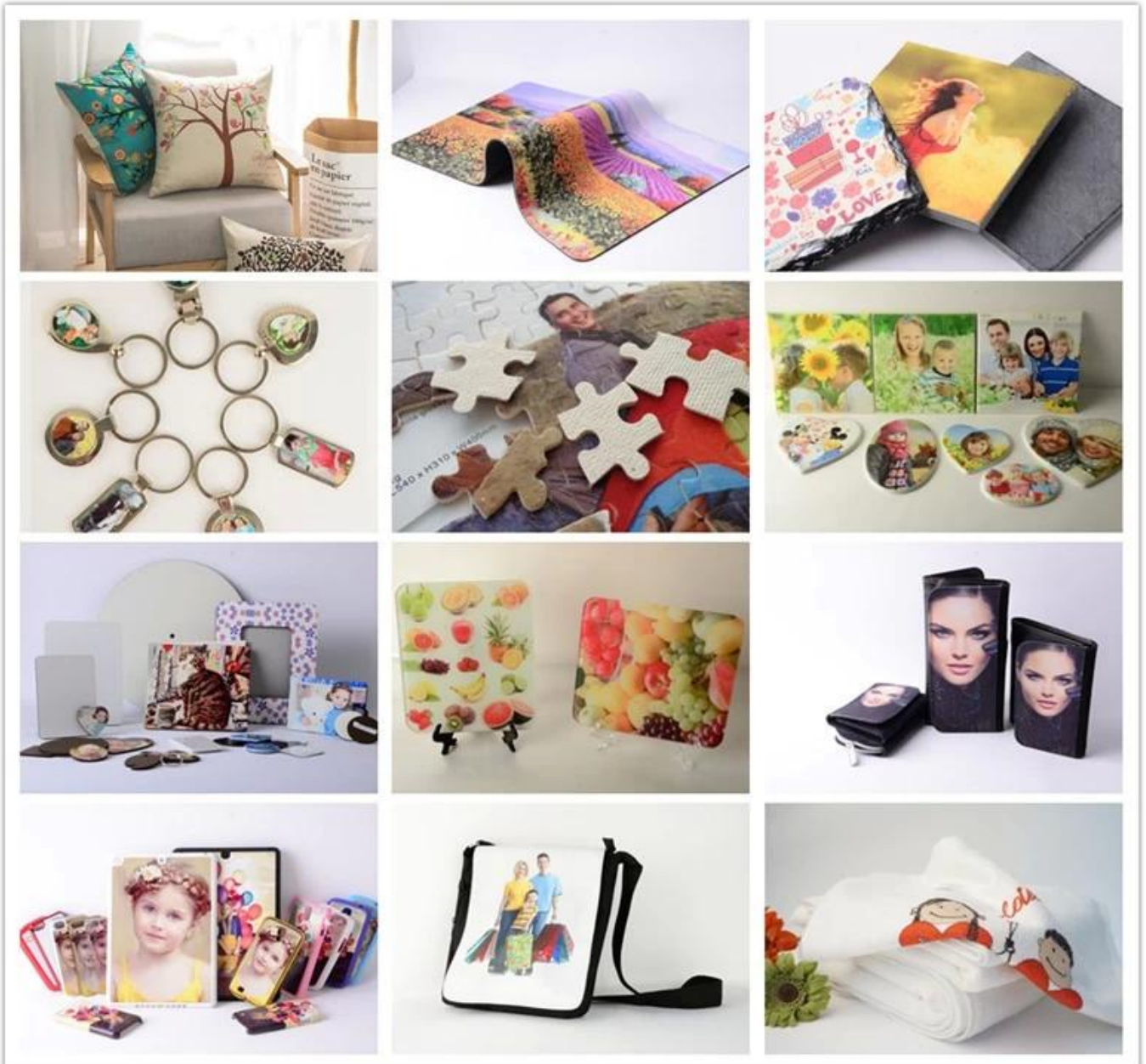
3D printing, 3D printing, 3D printing, 3D printing, 3D printing, 3D printing, 3D printing, 3D printing, 3D printing, 3D printing, 3D printing.

Specification

Model	COS-HOBBY
Brand	Microtec, COS-HOBBY
Dimensions	9"x13"(23x33cm)
Printer Model	NTTE-2421WR 3D printer
Layer Thickness	0.1mm
Resolution	30µm
Temperature	225°C
Accuracy	±0.5%
Temperature Range	0-999°C
Power	0.8KW/1.0KW
Voltage	220V/110V
Frequency	50~60Hz
Weight	27kg
Dimensions	62x42x44cm

Application

COS-HOBBY A4                                           .   ,                                                       .



Gallery



Machine Warranty:

Microtec                                                  .     Microtec                                 

□□.

* □□ □ □□□ □□ □□ □□ □□ □□.

* 2□ □□

* □□ □ □□□ □□ 5□ □□.

* □□□□ □□ □□□ 5□□□□.