

Description

MT-FD03 is a high-performance industrial LED lighting fixture designed for factory environments. It features a compact, rectangular design and is compatible with PLC and IR sensors for automated control. The fixture is available in 30W, 60W, and 120W power options, with 2, 4, and 6 light heads. It is built with a durable, corrosion-resistant housing and is suitable for installation in various industrial settings. The fixture is designed for easy installation and maintenance, with a 200mm depth and a 4-year warranty.

Feature

- * LED lighting compatible with PLC and IR sensors
- * Available in 30W, 60W, and 120W power options
- * 2, 4, and 6 light heads available
- * Durable, corrosion-resistant housing
- * Easy installation and maintenance
- * 200mm depth
- * 4-year warranty

Specification

Model	MT-FD03
Dimensions	500 * 600mm
Operating Temperature	150°C
IR Sensor	6 sensors
Voltage	220V 50Hz 3KW
Dimensions (H x W x D)	900 * 580 * 260mm
Weight	32kg

Application

MT-FD03 is suitable for use in various industrial environments, including factories, warehouses, and production lines. It provides bright, uniform illumination and is designed for long-term, reliable operation in demanding conditions.

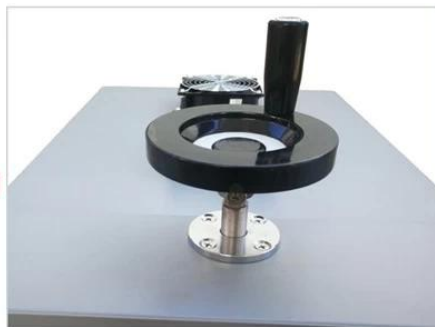
Gallery

Details

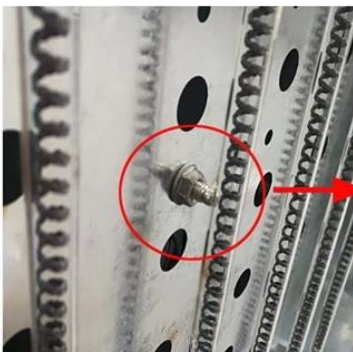


Double Fans

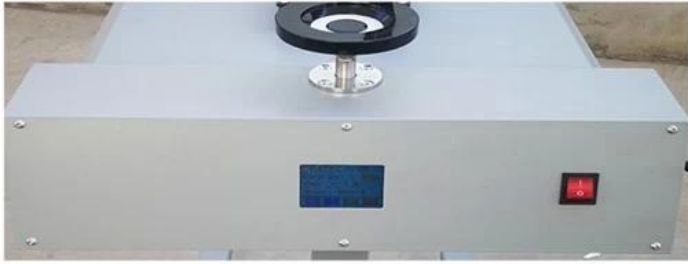
Adjust height wheel



Carbon Fiber IR Lamps



Temperature test probe



Temperature can be controlled at any time



Led Touch Display

Carbon fiber IR lamp:6 PCS

Power:From "0" W to 3000W



On and Off Buttons



Machine base



Package

