

## Description

### TWL-300 Laser Transfer Paper - Dark

- 1.Product Name: Dark Color Laser Transfer Paper
- 2.Code: TWL-300
- 3.Size: A4 A3 A B
- 4.Printers compatible: OKI:C610DN,C830DN,C6100,C6500,C5600,C5700,C5700,C5800,C610DN,C830. Canon:CLC700/800/900 SERIES, CLC100/100S/5000. Minolta:CF910CLC700/800/900 SERIES, CLC100/100S/5000.Epson Aculaser C8600, Xerox5750, Acolor620 etc.
- 5.Printing Mode-Quality setting--Picture,Weight-Ultra heavy>manual feed paper choose--121-188g/m<sup>2</sup>,Mirror Image printing
- 6.Heat press temperature: 165 degree
- 7.Heat time: 25seconds
- 8.Pressuer: medium Pressure
- 9.Warm/Hot Peel after heat press
- 10.Fabric: Light Fabric,Dark color fabric(black,dark blue.etc)any fabric,cotton
- 11.Packing: 20sheets/polybag or 100sheets/pac
- 12.Heating Tips: 5 dark transfer papers add one grease proof paper,peel off the printing image you need heat and put on the fabricadd the grease proof paper and one piece white cotton,the image will more brighter.



## Feature

- Customize fabric with favorite photos and color graphics.
- Designed for vivid results on dark, light-colored cotton or cotton/polyester blend fabrics
- Ideal for personalizing T-shirts, canvas bags, aprons, gift bags, mouse pads, photographs on quilts etc.
- Iron on with a regular household iron & heat press machines.
- Great durability with image retaining color, wash-after-wash.

## Specification

# Colour Laser Transfer Paper

## What's your need?

Laser  
Transfer Paper :  
(Code:TWL-300)



Computer:



Colour-Laser/-Copier Printers  
(Normal Tones):



Heat Press/  
Iron-On

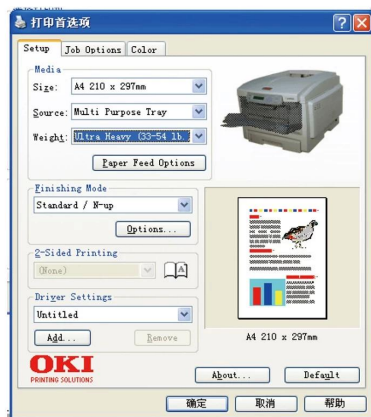


## About Transfer Paper?

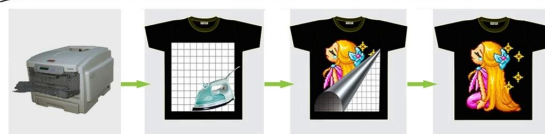
With laser transfer paper, you can transfer your photos and images with wax crayons, Oil pastels, colour -laser/-copier printers to T-shirts, sweatshirts, aprons, or just about any cotton, cotton blend, or polyester fabric. For best results, use white, light or dark colored material with a smooth surface.

## 1. Printing Instructions

- 1 Print design on the paper with the correct orientation (do not mirror/reverse the image) panel. Print the image on the coated side of the transfer paper. Check printer settings; single-sheet feeding is recommended.
- 2 Use (Media source: Multi Purpose Tray, Weight: Ultra Heavy print settings when preparing for print.



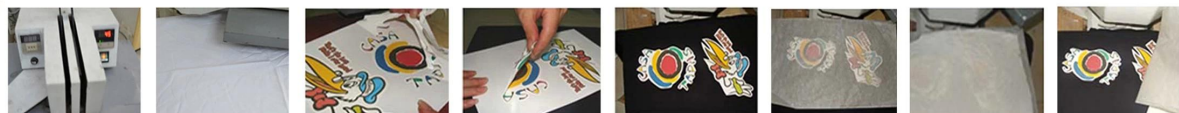
## 2. Hand Iron Transferring Instructions:



- a. Iron on a hard surface, Don't steam, Place a pillow case or T-shirt between your hard surface and your garment to allow the heat to penetrate the transfer paper.
- b. Adjust iron at "Wool/cotton" setting. Briefly iron the fabric to ensure that it is completely smooth.
- c. Before transferring, leave the printed image to dry for approx. 15 minutes, cut out the motif without leaving a margin around the edges, peel off image layer gently from the back paper. Place image layer onto the textile with the printed image facing upwards.
- d. Cover a grease proof paper onto the image layer, Iron the grease proof paper, applying less pressure, warm up the grease proof paper evenly with slow circling, then enhance pressure movements from edge to edge and make sure that heat is evenly transferred over the entire area, Don't forget the corners and edges. When moving the iron, less pressure should be given, iron for approx. 4 min for 8.5" X 11" size image.
- e. Follow-up ironing the whole the grease proof paper quickly, heating all of the grease proof paper again for approximately 10-13 seconds, then peel off grease proof paper starting at the corner.

Notes: It is possible to use the same grease proof paper for 5 times.

## 3. Heat Press Transferring Instructions:



- a. Set the temperature of heat press on 150°C and 25 ~35 second to transfer.
- b. First, press the fabric for about 5 second to make sure smoothly.
- c. After printing, please wait for a while to make sure to dry of inks, then cut off the edge along image, peel the blank off.
- d. Peel off the image layer gently
- e. Place image layer with image facing upward on fabric.
- f. Lay over a grease proof paper onto image
- g. Lay over a cotton fabric onto grease proof paper, then press on 150°C and 25 ~35 second to transfer
- h. Peel off the cotton fabric and the grease proof paper. **Finished!**

## 4. Before Washing:

Leave finish item for at least 24 hours before wash. wash inside out in cold water. Dry at normal heat settings. Do not use bleach, fabric softener, or harsh detergents. Do not iron directly over transfer.

**IMPORTANT!** We thoroughly test each of our products on various substrates using different transfer equipment. however, it is impossible for us to duplicate all variables using all substrates and transfer equipment. Therefore, it is essential that you test the paper prior to production using your equipment, methods, and substrate material. Heat presses vary in accuracy. Conduct tests to determine the best time and temperature to use with your equipment. Please keep in mind that the seller's and manufacturer's maximum obligation shall be replace any paper that has proven to be defective. Neither the seller nor the manufacturer shall be liable for injury, direct or the consequential, arising out of the use of, or inability to use the paper.

## Application

Dark color laser transfer paper is ideal for customizing dark, or light colored T-shirts, aprons, gift bags, mouse pads, photographs on quilts and more.



## Gallery

t-shirt



T-shirt

Mini T-shirt

Cap



phone case



iPhone 5 Case



Polymer Coaster



Ornament



Fridge Magnet



home decoration



Mirror



ID Tag

Keychain



Pill Box

personal accessories