

Description

Introducing the SSH Swing Away Heat Press, an ideal choice for entry-level businesses or hobbyists seeking a practical and safe alternative to clamshell heat presses. The swing-away design ensures a more even pressure distribution, enhancing both safety and efficiency.

With a 180-degree rotation of the swing arm, this swing heat press allows the heat platen to be moved aside safely, minimizing the risk of machine shaking or toppling. This feature contributes to a secure and stable operation, ensuring peace of mind during use.

The SSH Swing Away Heat Press accommodates printable articles with a thickness of up to 15mm, making it versatile for transferring various items such as fabric, T-shirts, mouse pads, ceramic tiles, glass, coasters, MDF, and more. Explore the capabilities of this heat press for a wide range of applications, all while prioritizing safety and ease of use.



Brand New

Simple Swing Away Heat Press Machine

from microtec

Machine Type: Manual, Swing Away, Economy
Platen Size: 12**15"(29x38cm)

Model No.: SSH-1215



The image shows a red and black manual heat press machine. It features a large red rectangular platen at the base. A black metal frame supports a swing arm mechanism on the right side, which can rotate 180 degrees. The machine has a control panel with a digital display and buttons. A black handle is attached to the swing arm for manual operation. The background is a light gray with a subtle geometric pattern.



Limited Rod:
Stand still, more safty



Vertical Digital Controller:
Accurate in time and
temp. display



12"*15" Size:
Popular size and versatile



Swing Away Design:
Safe easy to use,
and better pressure

Feature



Vertical Digital Time & Temp. Controller: This controller makes the electric box smaller (light volume weight), while is also accurate in time and temp. display.



Swing Away Design: It helps you can work away from the heat, and easy to put the material to the press machine, and also with better pressure as the pressure can be directed straight down.



Limited Rod: This rod helps to keep the machine standing still. SSH Swing Away Heat Press is designed to provide a secure user experience, making it an excellent choice for both beginners and experienced users.



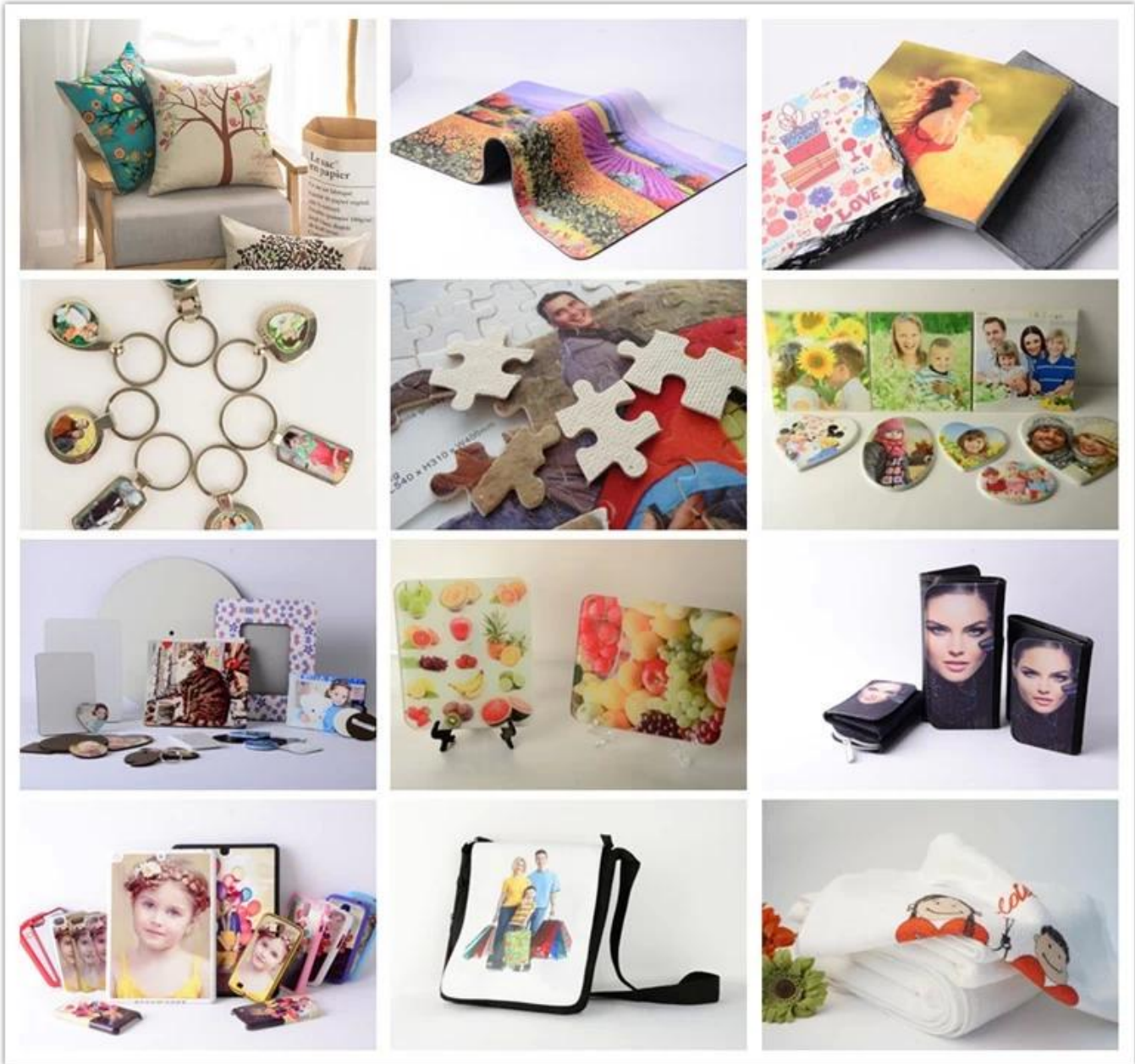
Practical and Cost-Effective: This heat press provides a practical and cost-effective solution for businesses and hobbyists, offering reliable performance without compromising on safety or functionality.

Specification

| | |
|------------------------------|--|
| Model No. | SSH-1215 |
| Machine Type | Manual, Swing Away, Economy |
| Platen Size | 12"x15" (29x38cm) |
| Controller | NTTF-2421WR Digital Time & Temp. Control |
| Printable Articles | Up to 15mm Thickness |
| Time heating to 200°C | Around 10minutes |
| Voltage | 110V/ 220V |
| Power | 1.6KW/ 1.8KW |
| Frequency | 50HZ/ 60HZ, Current 10-15A |
| Time Range | 0-999 Sec. |
| Maximum Temp | 225 C |
| Machine Size | 44.5x39x29cm |
| Carton Size | 55x47x45cm |
| Net Weight | 23kg |
| Gross Weight | 26kg |

Application

SSH1215 heat press accommodates printable articles with a thickness of up to 15mm, providing versatility for transferring a wide range of items, including fabric, T-shirts, mouse pads, ceramic tiles, glass, coasters, MDF, and more.



Gallery



