

Description

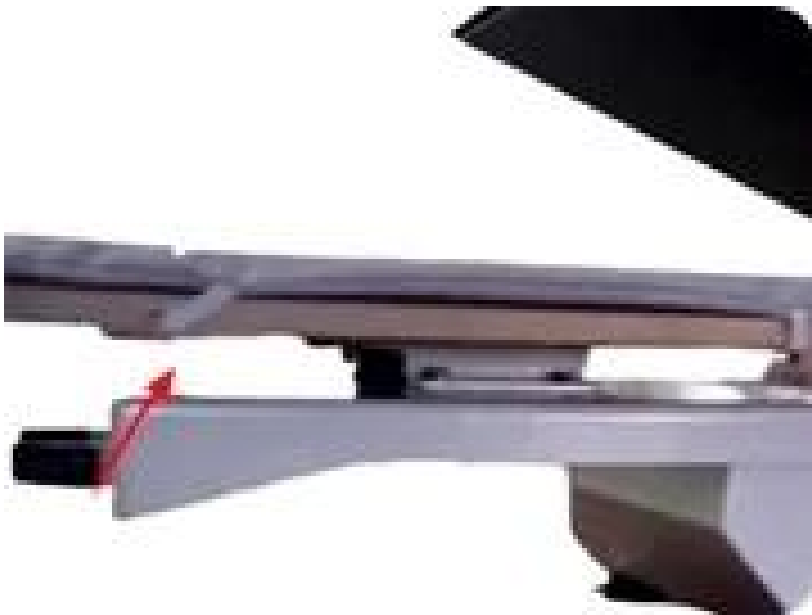
Discover the Microtec X-Series - a breakthrough in heat transfer printing technology. Our upgraded electric motor, a pinnacle of innovation, seamlessly combines automation, user-friendly controls, and versatile garment handling. With a sleek 6-inch touchscreen interface and a specialized clothing compartment, achieving professional-grade results has never been easier. Experience stability and longevity with our electric push rod technology and uniform heating with a 5cm-thick aluminum plate. Whether you're a seasoned professional or a beginner, the Microtec X-Series ensures a streamlined and efficient printing process. Available size: 38x38cm, 40x50cm. You can choose a suitable size in accordance with your own sublimation needs. Elevate your printing capabilities with Microtec - where simplicity meets precision, and every transfer tells a story.

Fully Automatic Heat Press

- Enhanced Safety: Requires dual-hand activation for a secure operation;
- Aluminum Heating Plate (up to 5kg): Ensures even heat distribution for clear and durable transfers.
- Flexible Transfer: Larger Threadability space for easy and flexible item transfers
- Stability: Up to 80kg (32 pounds) pressure for precise transfers
- Options Galore: Choose from 38*38cm (15*15"), 4050cm (16**20"), and larger for diverse DIY possibilities



Feature



Large Threadability Space: The X-Series introduces a threadability Space specially designed to meet convenience for all your printing needs.



Touchscreen Control: User-friendly large touchscreen interface, to 3 frequently used settings, production cycle counter, and auto off function.



Two-Hand Start Switch: Prioritize safety with our dual-hand start switch, ensuring secure operation at all times.

Product Features



Fully Automatic



Slide-out for Easy Use



High Pressure Application



Wide Opening



Safety Use
Auto-Off Feature



Even Heat
Even Pressure

Specification

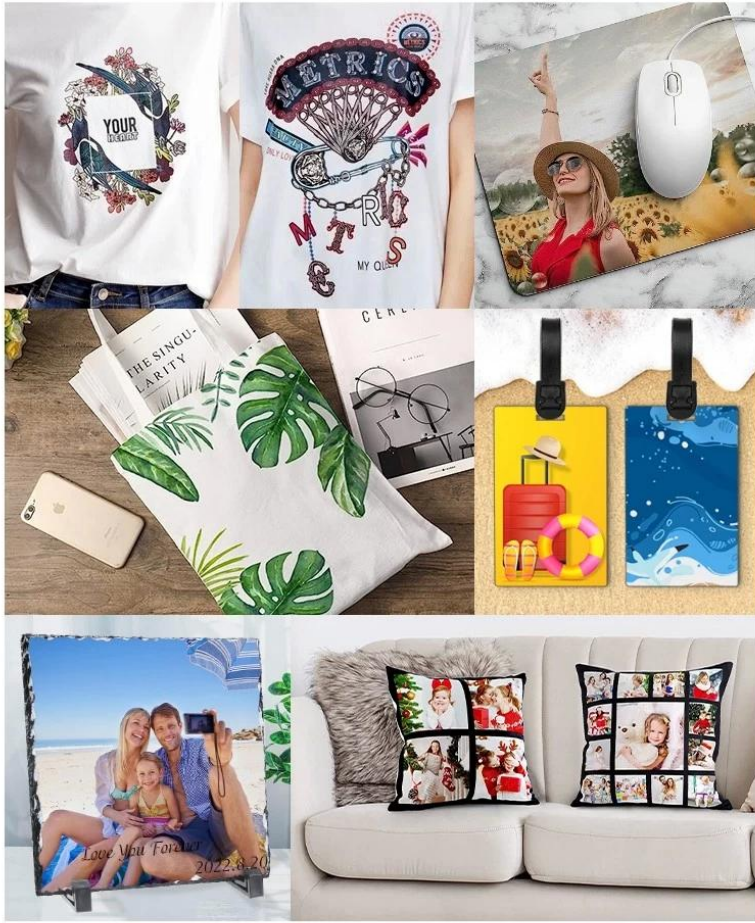
| | |
|-------------------------------|---|
| Model No. | MODEL-X15 / MODEL-X20 |
| Platen Size | 15"x15"(38x38cm)/ 16"x20"(40x50cm) |
| Machine Type | Full Automatic, Slide-out Under Plate |
| Controller | GY-13 Large & High-Resolution Touchscreen Control Panel |
| Control Panel Features | Store up to 3 frequently used settings, production cycles counter |
| Voltage | 120V/ 220V |
| Frequency | 50/ 60HZ |
| Net Weight | 35KG / 42KG |
| Gross Weight | 39KG / 46KG |
| Machine Size | 55x42x41cm / 53x39x41cm |
| Carton Size | 65x52x50cm / 75x52x50cm |
| Certification | CE Approval |
| Warranty | 2 Years For Entire Machine, 5 Years For Heat Platen |

COMPARISON

| Contrast value | Model X | Another Brand Auto Heat Press |
|-------------------|--|---|
| Pressure | 95kg/cm | 35kg/cm |
| Threadability | Large threadability space for flexible garment placement | no design for threadability clothes on, only put the clothes flat on the machine, transfers limited |
| Temperature table | 6" Touch screen control panel | Digital Time & Temp. Control |
| Opening angle | Opening angle up to 15cm, safer operation | Opening angle is only 5cm, and the operating space is limited |
| Heating Plate | Up to 5kg aluminum heating plate for even heat distribution | Only 2kg heating plate, uneven heat distribution |
| Pusher method | Electric drive pusher Design, High pressure, stable operation, longer life | Plastic Electric drive pusher design, Low pressure, short life |

Application

Model X Full Automatic Heat Press Machine caters to a variety of DIY projects, making it ideal for high-volume shops, specialty decorators, and Direct-to-Garment printing.



Gallery

