

Description

Model-A Series automatic heat press machine, adopt the most advanced electric control system to achieve the full automatic operation - opening and shutting down automatically. The fully automatic electric heat press can achieve users' hands-free and labor-saving. It is easy and user-friendly for users to operate compared with manual heat press machines. It is the optimal option for household use or commercial use, such as small businesses, beginners, start-ups, etc. This clamshell auto heat press is suitable for a wide range of materials, including cotton, polyester, and more. Its versatility makes it a great investment for any business looking to expand its product line.
Available size: 38X38CM, 40X50CM. You can choose a suitable size in accordance with your own sublimation needs.



Feature



Slide-out Drawer: It can make users more easily lay out and take out sublimation materials and protect them from being burnt



Advanced Digital Controller: Simple design and clear system. It is very easy for user to operate. Live digital time and temperature readout for accurate results every time with production cycle counter. The pressure can be adjusted from 0-10 according to different thickness of sublimation materials.



Red Emergency Stop Button: In case of any emergency, user can press button "Reset" to stop the operation.

**Fully Automated System**

This auto heat press machine allows you to liberate your hand. It is fully automated, providing consistent and precise heat application without the need for manual intervention.

Adjustable Pressure

The pressure can be adjusted from 0-10 to meet different sublimation needs.

Upgraded motor

The electric heat press with upgraded motor has lower noise when running.

Fully Pull-out Bottom Plate

The fully pull-out bottom plate allows for quick and easy placement of materials, minimizing the risk of damage and ensuring consistent results.

Wide Opening Angle & Safety

The Clamshell Auto Heat Press boasts a generous opening angle, making it easy to load and unload materials without the risk of burning or scalding. The opening height is about 15cm (6 inches). There will be ± 2–3cm differences depending on the local voltage. Additionally, users can press the button "Reset" to make the machine stop working at once if there is any emergency.

High-efficient & Cost-effective

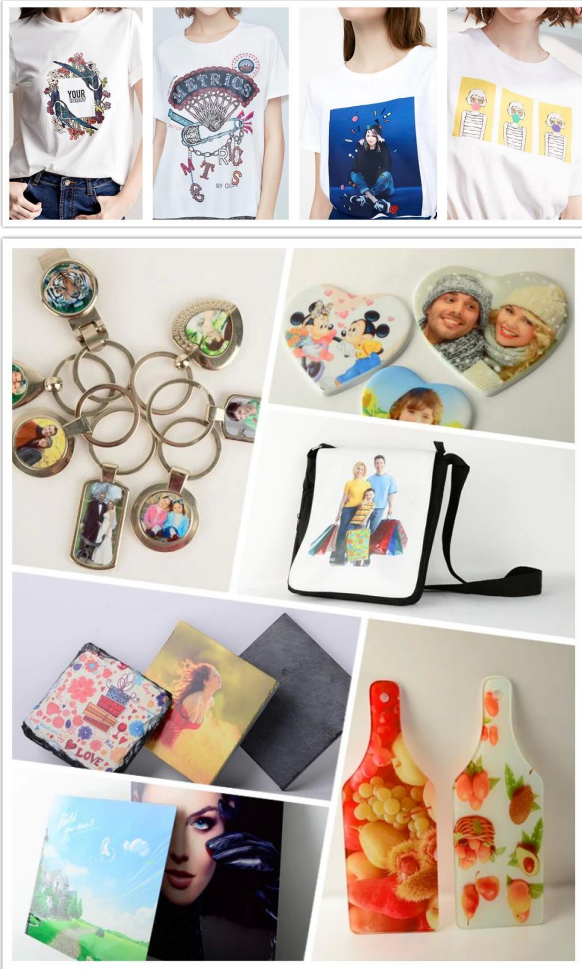
This clamshell auto heat press can shut down in a fast speed and heat up fast as well as distribute heat evenly. It also offer excellent value for money, with a reasonable price point that makes it an affordable investment for businesses of all sizes.

Specification

Model No.	MODEL-A15 / MODEL-A20
Machine Type	Auto Open, Slide-out Under Plate
Controller	GY-08 Controller with Dual time setting
Pressure	0-10
Maximum Temp.	230°C
Temperature Accuracy	±0.5%
Voltage	120V / 220V, Single-phase
Frequency	50/ 60HZ
Net Weight	35.5KG / 43KG
Gross Weight	39.5KG / 49.5KG
Machine Size	53x40x42cm / 65x42x42cm
Carton Size	65x51x51cm / 78x54x55cm
Certification	CE Approval
Warranty	Two Years For Entire Machine, Five Years For Heat Platen

Application

This Electric Full Auto Heat Press Machine is suitable for any sublimable or transferable product. For example: T-shirts, photo frames, slippers and other flat products.



Gallery

Product Gallery



Machine Warranty

Microtec's main objective is to support all our customers, who can manage their heat transfer activities without interruption. So Microtec offers FREE SPARE PARTS with a quantitative order and the following guarantee:

- * Free lifetime technical support on all heat press machines.
- * Two-year warranty
- * Five-year warranty on fusions and welds.
- * Five-year warranty on the heating plate.
- * Six-monthly warranty on the heaters of cups, plates and caps.