

## Description

Microtec new innovative Model X Full Automatic Heat Press Machine, equipped with a large and high-resolution touchscreen control panel, Model X offers intuitive navigation and convenient access to stored settings, production cycle monitoring, and automatic on/off functionality. Safety is paramount with our dual-switch mechanism, requiring simultaneous activation by both hands for enhanced operational security.

Crafted with a robust 5kg high-strength aluminum heating plate, the Model X ensures even temperature distribution, resulting in superior transfer results. The slide-out bottom plate provides ample space for garment positioning, offering flexibility during transfer operations.

Experience stability and precision with our high-pressure push rod design. Available in two versatile sizes (3838cm and 4050cm), Model X caters to a variety of DIY projects, making it ideal for high-volume shops, specialty decorators, and Direct-to-Garment printing.

Moreover, the Model X features a fully automatic open function, creating a heat-free workspace for enhanced efficiency and safety. Elevate your printing capabilities with the Model X Full Automatic Heat Press Machine, setting new standards in quality and performance.



## Feature

### Large and

**High-Resolution Touchscreen Control Panel:** Navigate with ease and precision on our intuitive touchscreen interface.

**Convenient Control Panel Features:** Store up to 3 frequently used settings, monitor production cycles, and enjoy auto on/off functionality for added convenience.

**Dual-Switch Two-hand Mechanism:** Prioritizing safety, our machine requires simultaneous activation by both hands.

**Robust Aluminum Heating Plate:** With a sturdy 5kg construction, experience uniform heat distribution for flawless transfer results.

**Retractable Bottom Plate:** Gain flexibility in garment positioning, thanks to the spacious bottom plate that adapts to your needs.

**High-Pressure Push Rod Design:** Achieve stability with high pressure, perfect for high-volume shops, specialty decorators, and Direct-to-Garment printing needs.

**Versatile Size Options:** Choose between 3838cm (15"x15") and 4050cm (16"x20") sizes to suit various DIY projects.

**Fully Auto Open Feature:** Enjoy a heat-free workspace with our fully automatic open function, enhancing efficiency and safety.



## Specification

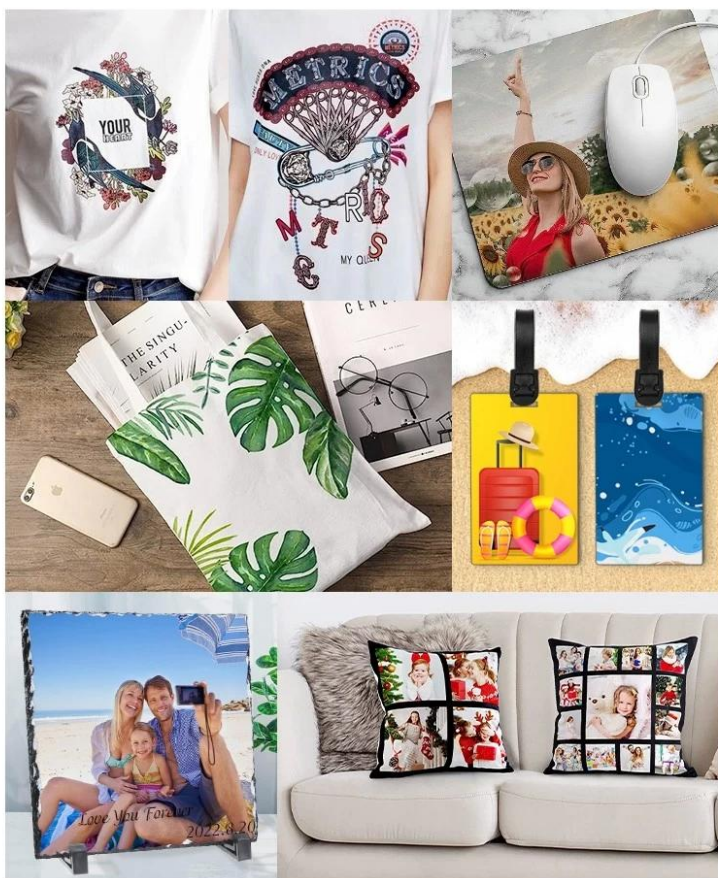
<b>Model No.</b>	MODEL-X15 / MODEL-X20
<b>Platen Size</b>	15"x15"(38x38cm)/ 16"x20"(40x50cm)
<b>Machine Type</b>	Full Automatic, Slide-out Under Plate
<b>Controller</b>	GY-13 Large & High-Resolution Touchscreen Control Panel
<b>Control Panel Features</b>	Store up to 3 frequently used settings, production cycles counter
<b>Voltage</b>	120V/ 220V
<b>Frequency</b>	50/ 60HZ
<b>Net Weight</b>	35KG / 42KG
<b>Gross Weight</b>	39KG / 46KG
<b>Machine Size</b>	55x42x41cm / 53x39x41cm
<b>Carton Size</b>	65x52x50cm / 75x52x50cm
<b>Certification</b>	CE Approval
<b>Warranty</b>	2 Years For Entire Machine, 5 Years For Heat Platen

## COMPARISON

Contrast value	Model X	HTV Auto Heat Press
Pressure	95kg/cm	35kg/cm
Threadability	Large threadability space for flexible garment placement	no design for threadability clothes on, only put the clothes flat on the machine, transfers limited
Temperature table	6" Touch screen control panel	Digital Time & Temp. Control
Opening angle	Opening angle up to 15cm, safer operation	Opening angle is only 5cm, and the operating space is limited
Heating Plate	Up to 5kg aluminum heating plate for even heat distribution	Only 2kg heating plate, uneven heat distribution
Pusher method	Electric drive pusher Design, High pressure, stable operation, longer life	Plastic Electric drive pusher design, Low pressure, short life

## Application

Model X Full Automatic Heat Press Machine caters to a variety of DIY projects, making it ideal for high-volume shops, specialty decorators, and Direct-to-Garment printing.



## Gallery

