

Description

MT-FD03 LED 30W PLC 220V 50Hz 3KW 900*580*260mm 32mm

Feature

- * LED 30W PLC 220V 50Hz 3KW
- * 900*580*260mm
- * 30W
- * 6mm 3mm 2,4,6mm
- * 32mm
- * 220V 50Hz 3KW
- * 900*580*260mm
- * 200mm
- * 4mm

Specification

Model	MT-FD03
Dimensions	500 * 600mm
Temperature	150°C
Power	6W
Voltage	220V 50Hz 3KW
Weight	900 * 580 * 260mm
Height	32mm

Application

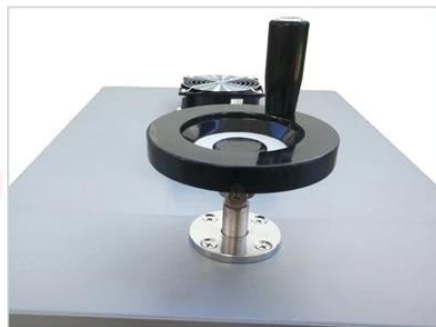
MT-FD03 LED 30W PLC 220V 50Hz 3KW 900*580*260mm 32mm

Gallery

Details

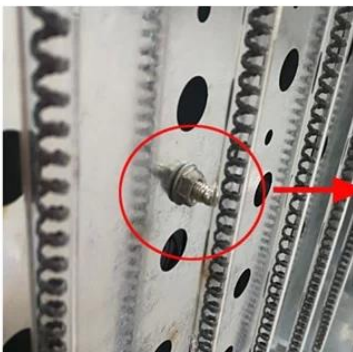


Double Fans

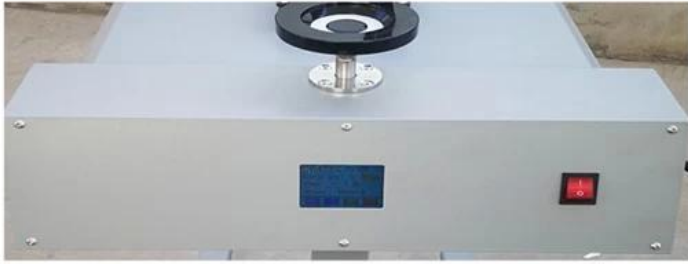


Adjust height wheel

Carbon Fiber IR Lamps



Temperature test probe



Temperature can be controlled at any time



Led Touch Display

Carbon fiber IR lamp:6 PCS

Power:From "0" W to 3000W



On and Off Buttons



Machine base



Package

