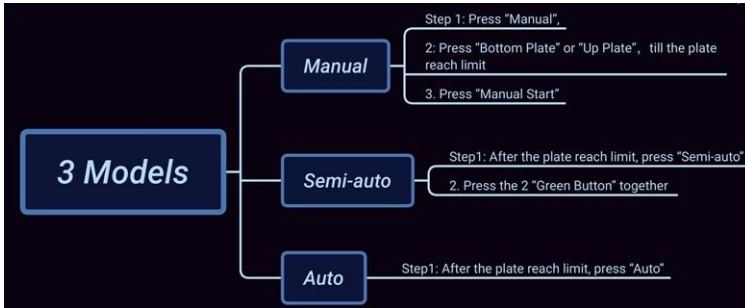


## Description

---

The XSTM-98 [Pneumatic large heat press](#) is an outstanding [heat press machine](#) for large-scale production. As the biggest size [heat press machine](#) Microtec produced, it features a 1.5m x2.5m (59"x98") heat platen, powerful air cylinders, an reciprocating dual tray system, and three operation models.

For XSTM [large format heat press](#), it is an idea to sublimation textile, cloth, flag, raincoat, umbrella, metal sheet etc large format material. With two working tables designed at one side of the machine, when the printing is finished the tables roll out while another one will roll into the machine for printing automatically. Two working stations take turns doing the printing. The air cylinders offer very high pressure, which makes sure excellent transfer results. With reciprocating dual tray system, it speeds up your production, and reduce your labor; Only one worker can operate this [dual station auto shuttle heat press machine](#). And you can choose manual, semi-automatic and fully automatic production molds.



The unique designs of our XSTM large format heat press machine, which differentiates other large format sublimation heat press in the markets are:

1) it adopts pluggable heat elements: there are separate heat tubes in the platen, and if there is any one broken, you can only change the one tube easily. No need to replace the whole heat platen which is with much higher cost.

How to find out the problem of heat platen: <https://www.youtube.com/watch?v=GbgDx8N0NJA>

How to exchange the heat platen: <https://www.youtube.com/watch?v=2G-kFAbYw4g>

2) it adopts PLC digital touch screen controller: The controller can control each heat tube temp., then the whole heat platen can have more even heat.

More PLC controller info: <https://www.heatpress.cn/news/Upgraded-PLC-digital-touch-screen.html>

This large heat press is ideal for maximizing the efficiency of your facilities and maintaining stable quality.

## UPGRADED PLC DIGITAL TOUCH SCREEN

Used for XSTM series Pneumatic Heat Press

- Easy maintenance
- Simple operation
- Temp difference within  $\pm 5^{\circ}\text{C}$
- Stable procedure ensure high efficiency

### Feature



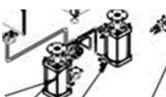
**PLC Touch Screen Digital Controller:** Equipped with a PLC digital touch screen controller, this heat press allows precise control of each heat tube's temperature. This ensures uniform heat distribution across the entire platen, promoting consistent and high-quality transfers.



**Upgraded Pluggable Heat Elements:** The platen incorporates separate heat tubes, enabling easy replacement of individual tubes in case of malfunctions. This design eliminates the need to replace the entire heat platen, resulting in significant cost savings.



**Dual Working Tables for High Production:** With the inclusion of two base plates on a single side, the XSTM-98 facilitates high production volumes, streamlining workflow and maximizing efficiency.



**Pneumatic with Air Cylinders:** That offer the higher pressure and could heat transfer aluminium sheet, wood, fabric, garment etc. Ideal for sublimation with good productivity and flexibility.



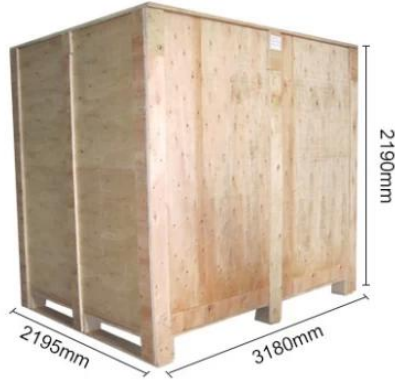
**Air Filter:** To adjust the pressure of it, easy to operate and maintenance.

### Specification

<b>Model No.</b>	XSTM-98
<b>Time Range</b>	0-999s
<b>Maximum Temp.</b>	225c
<b>Power</b>	21KW
<b>Voltage</b>	380V/ 3 Phase
<b>Machine Size</b>	425x304x194cm
<b>Printable Articles</b>	large fabrics, multiple piece goods, banners, floor mats, carpets etc
<b>Carton Size</b>	355x221x223cm

**Package**

Strong woden case packing



**Gallery**

**Features**



**Full Size Transfer**

Print size up to 150x250cm designed and built for full Transfer, even on the collar with fold.



**High Pressure**

With dual cylinders, the XSTM can provide high pressure for Maximum 45PSI.



**Even Heat Distribution**

The high quality heating plate of XSTM ensures exact temperature distribution over the whole heating Plate.



**Automatical Mode**

Heat press runs automatically with setting temperature and time



**Easy Operation**

Time and temperature are set within one digital controller panel, as well as the manual/ auto mode can be switched easily.



**One Side Two Stations**

With the 2 base plates, high production volumes can easily be achieved

**Applications**

